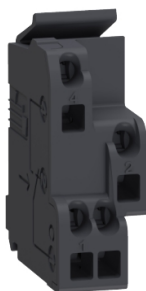


Product datasheet

Specifications



standard auxiliary contact, circuit breaker status OF-SD-SDE-SDV, 1 single contact

29450

Main

Product Or Component Type	Auxiliary contact
Device Short Name	OF SD SDE SDV
Device Application	Breaker status monitoring
Range Compatibility	ComPact ComPact NS630b...1600 ComPact ComPact NS1600b...3200 ComPact ComPacT INS ComPact Compact INV ComPact ComPact NSX EasyPact EasyPact CVS PowerPact PowerPact Multistandard ComPact ComPact NSX DC
Signal Contacts Composition	1 NO/NC

Complementary

Fault Type	General electric fault
Local Signalling	ON/OFF indication for open/close Trip indicator for relay trip indicator Fault trip for electrical fault
Auxiliary Contacts Type	Standard
Mounting Mode	Clip-on
[I_{th}] Conventional Free Air Thermal Current	5 A
Breaking Capacity (A)	AC-12: 6 A at 24 V AC 50/60 Hz AC-12: 6 A at 48 V AC 50/60 Hz AC-12: 6 A at 110 V AC 50/60 Hz AC-12: 6 A at 220/240 V AC 50/60 Hz AC-12: 6 A at 380/440 V AC 50/60 Hz AC-12: 6 A at 480 V AC 50/60 Hz AC-12: 6 A at 660/690 V AC 50/60 Hz AC-15: 6 A at 24 V AC 50/60 Hz AC-15: 6 A at 48 V AC 50/60 Hz AC-15: 5 A at 110 V AC 50/60 Hz AC-15: 4 A at 220/240 V AC 50/60 Hz AC-15: 2 A at 380/440 V AC 50/60 Hz AC-15: 1.5 A at 480 V AC 50/60 Hz AC-15: 0.1 A at 660/690 V AC 50/60 Hz DC-12: 6 A at 24 V DC 50/60 Hz DC-12: 2.5 A at 48 V DC 50/60 Hz DC-12: 0.6 A at 110 V DC 50/60 Hz DC-12: 0.3 A at 250 V DC 50/60 Hz DC-14: 1 A at 24 V DC 50/60 Hz DC-14: 0.2 A at 48 V DC DC-14: 0.05 A at 110 V DC DC-14: 0.03 A at 250 V DC
Minimum Load	100 mA at 24 V DC

Auxiliary Connection Terminal	Spring 0.5...1.5 mm ² (AWG 20...AWG 16)
Accessory / Separate Part Category	Spare part for Compact NS630b...1600 Spare part for Compact NS1600b...3200

Packing Units

Unit Type Of Package 1	PCE
Number Of Units In Package 1	1
Package 1 Height	1.400 cm
Package 1 Width	7.000 cm
Package 1 Length	7.000 cm
Package 1 Weight	16.900 g
Unit Type Of Package 2	BB1
Number Of Units In Package 2	10
Package 2 Height	4.500 cm
Package 2 Width	16.000 cm
Package 2 Length	16.000 cm
Package 2 Weight	177.000 g
Unit Type Of Package 3	S03
Number Of Units In Package 3	300
Package 3 Height	30.000 cm
Package 3 Width	30.000 cm
Package 3 Length	40.000 cm
Package 3 Weight	5.785 kg

Contractual warranty

Warranty	18 months
-----------------	-----------

Sustainability

Green Premium™ label is Schneider Electric's commitment to delivering products with best-in-class environmental performance. Green Premium promises compliance with the latest regulations, transparency on environmental impacts, as well as circular and low-CO₂ products.

Guide to assessing product sustainability is a white paper that clarifies global eco-label standards and how to interpret environmental declarations.

[Learn more about Green Premium >](#)

[Guide to assess a product's sustainability >](#)



Transparency RoHS/REACH

Well-being performance

✓ Reach Free Of Svhc

✓ Toxic Heavy Metal Free

✓ Mercury Free

✓ Rohs Exemption Information [Yes](#)

✓ Pvc Free

✓ Halogen Free Plastic Parts Product

Certifications & Standards

Reach Regulation [REACH Declaration](#)

Eu Rohs Directive Compliant
[EU RoHS Declaration](#)

China Rohs Regulation [China RoHS declaration](#)
Pro-active China RoHS declaration (out of China RoHS legal scope)

Environmental Disclosure [Product Environmental Profile](#)

Weee The product must be disposed on European Union markets following specific waste collection and never end up in rubbish bins

Circularity Profile No need of specific recycling operations